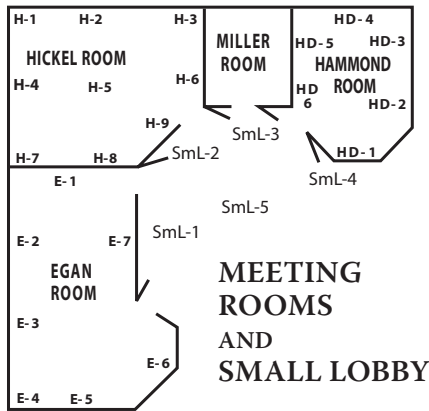
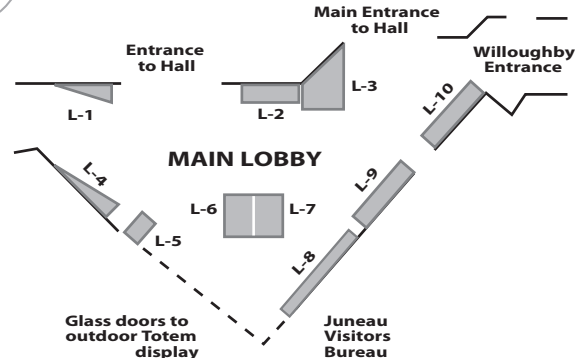
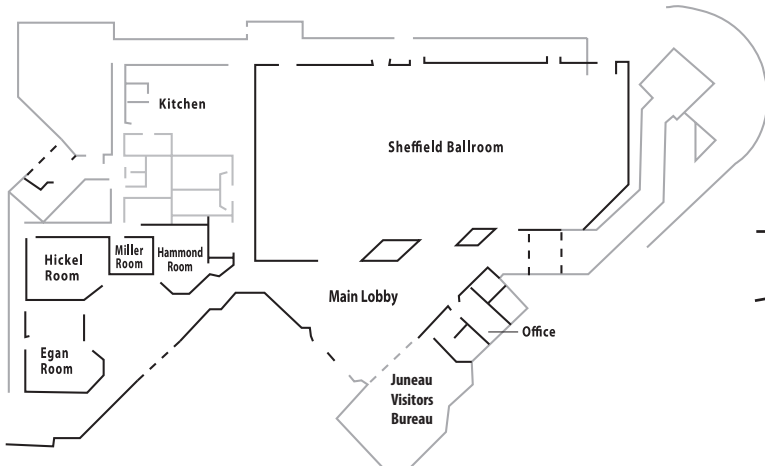


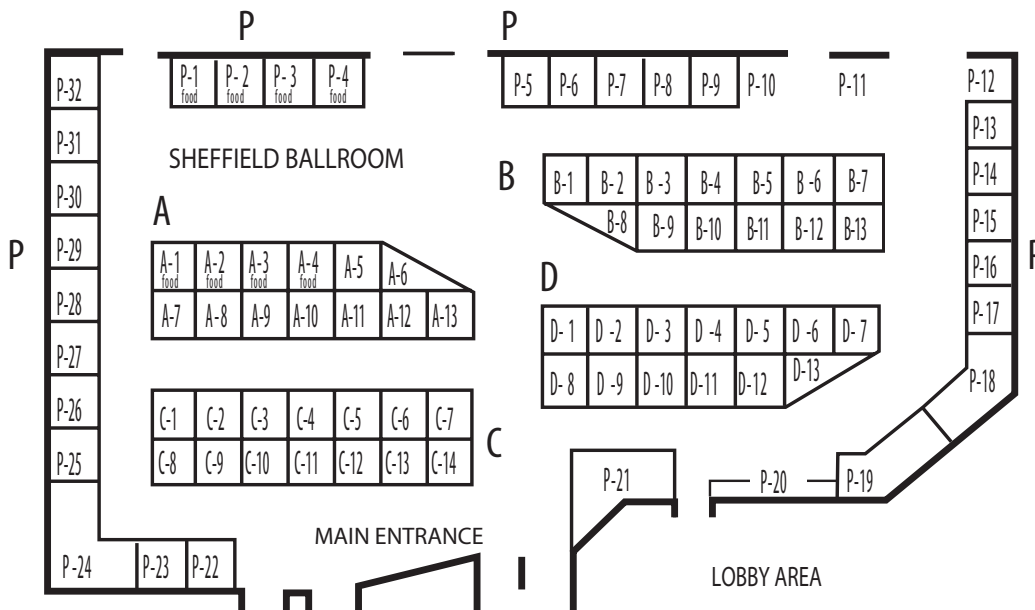
# THE TWENTY-SEVENTH ANNUAL PUBLIC MARKET

## CENTENNIAL HALL FLOOR PLANS



*(THESE DIAGRAMS ARE NOT TO SCALE)*

All space rentals in the Sheffield Ballroom are booths, constructed of panels (1/8" pegboard mounted on 2"x2" frames), typically 8' x 8' by 6' tall. All space rentals in lobby areas and meeting rooms are table displays (not enclosed by booth partitions), with rental rates determined by location and square footage.



# THE T W E N T Y - S E V E N T H   A N N U A L PUBLIC MARKET

## PUBLIC MARKET ANNEX (JUNEAU ARTS AND CULTURE CENTER) FLOOR PLANS

31	32	33	34	35	36	37	38
----	----	----	----	----	----	----	----

### Juneau Arts and Cultural Center

21	22	23	24	25	26	27	28	29	30
11	12	13	14	15	16	17	18	19	20

### 8' x 8' Booths

1	2	3	4	5	6	7	8	9	10
---	---	---	---	---	---	---	---	---	----



### BOOTH LAYOUT FOR THE PUBLIC MARKET ANNEX

This photo is of the Sealaska Native Arts Market, held the first weekend of June 2008 in the recently renovated Alaska National Guard Armory, now the Juneau Arts & Culture Center. The photo was taken next to a double booth (#39-40) pictured at extreme right. We intend to use the same drapes and frames for booth set ups.